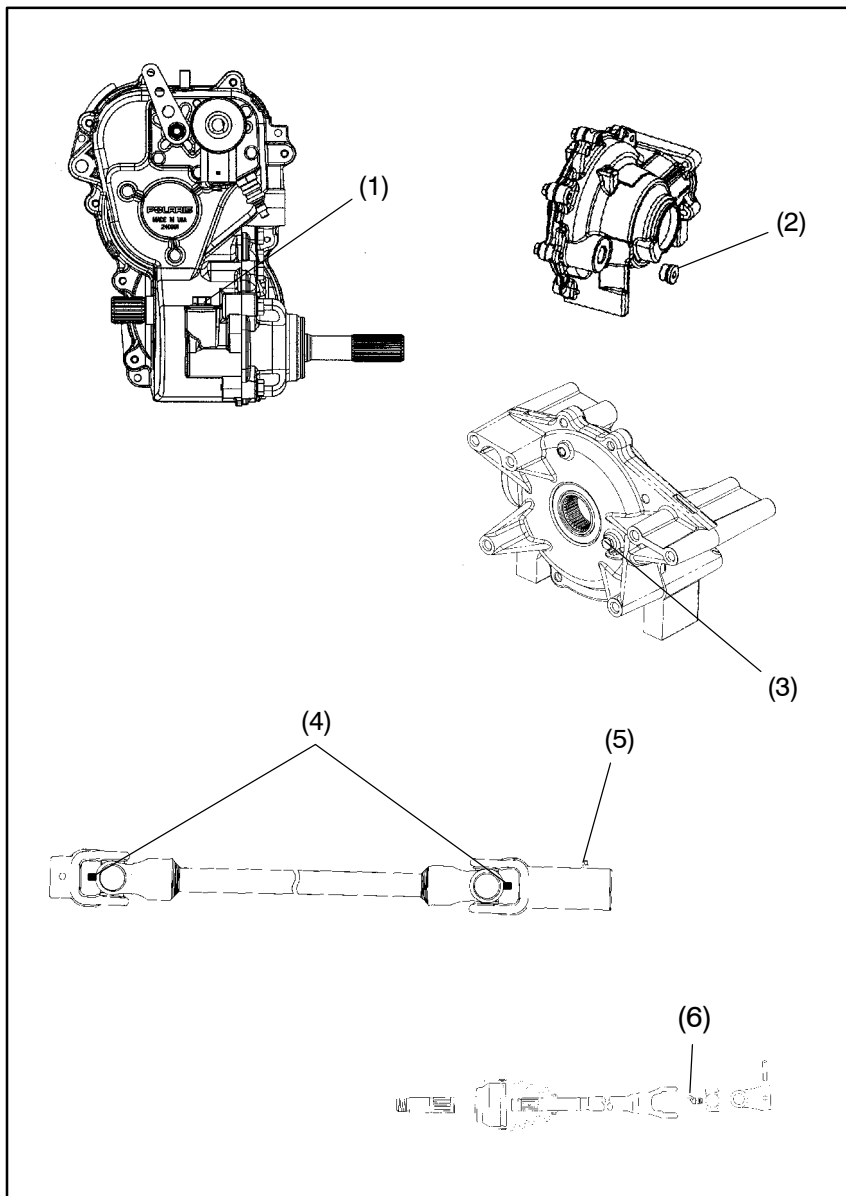


# MAINTENANCE AND LUBRICATION

## Lubrication Recommendations

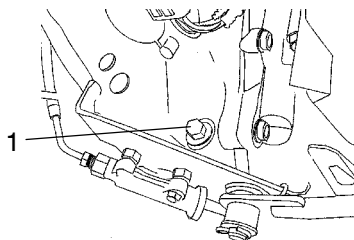


# MAINTENANCE AND LUBRICATION

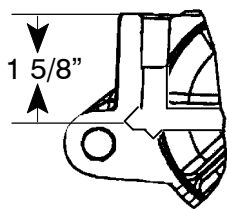
## Lubrication Recommendations

### Transmission Oil Check

The transmission oil fill plug (1) is located on the right side of the machine behind the footwell. The transmission oil level should be checked every six months or 1000 miles (1600 km), whichever comes first. Transmission oil should be changed annually.



1. To access the fill plug, remove the four screws on the footwell and gently pull outward.
2. Remove the fill plug and check the oil level. The oil should be maintained 1 5/8" from the top of the fill plug hole. See the specifications section of the owner's manual for oil capacities.



### Transmission Oil Change

1. Remove the four screws on the footwell and gently pull outward to remove the footwell.
2. Remove the transmission drain plug (2), which is located on the bottom left-hand side. Drain the oil into a drain pan and dispose of properly.
3. Clean and reinstall the drain plug. Torque to 14 ft. lbs. (19 Nm).
4. Remove the fill plug and add Polaris Premium Synthetic Gearcase Lubricant to the recommended level (1 5/8" from the top of the fill plug hole).
5. Replace the fill plug and check for leaks.
6. Reinstall the footwell and screws.

